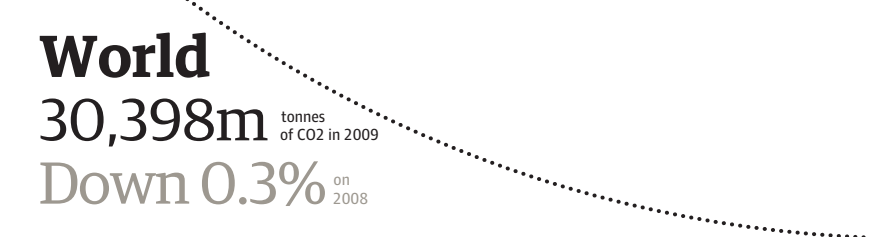
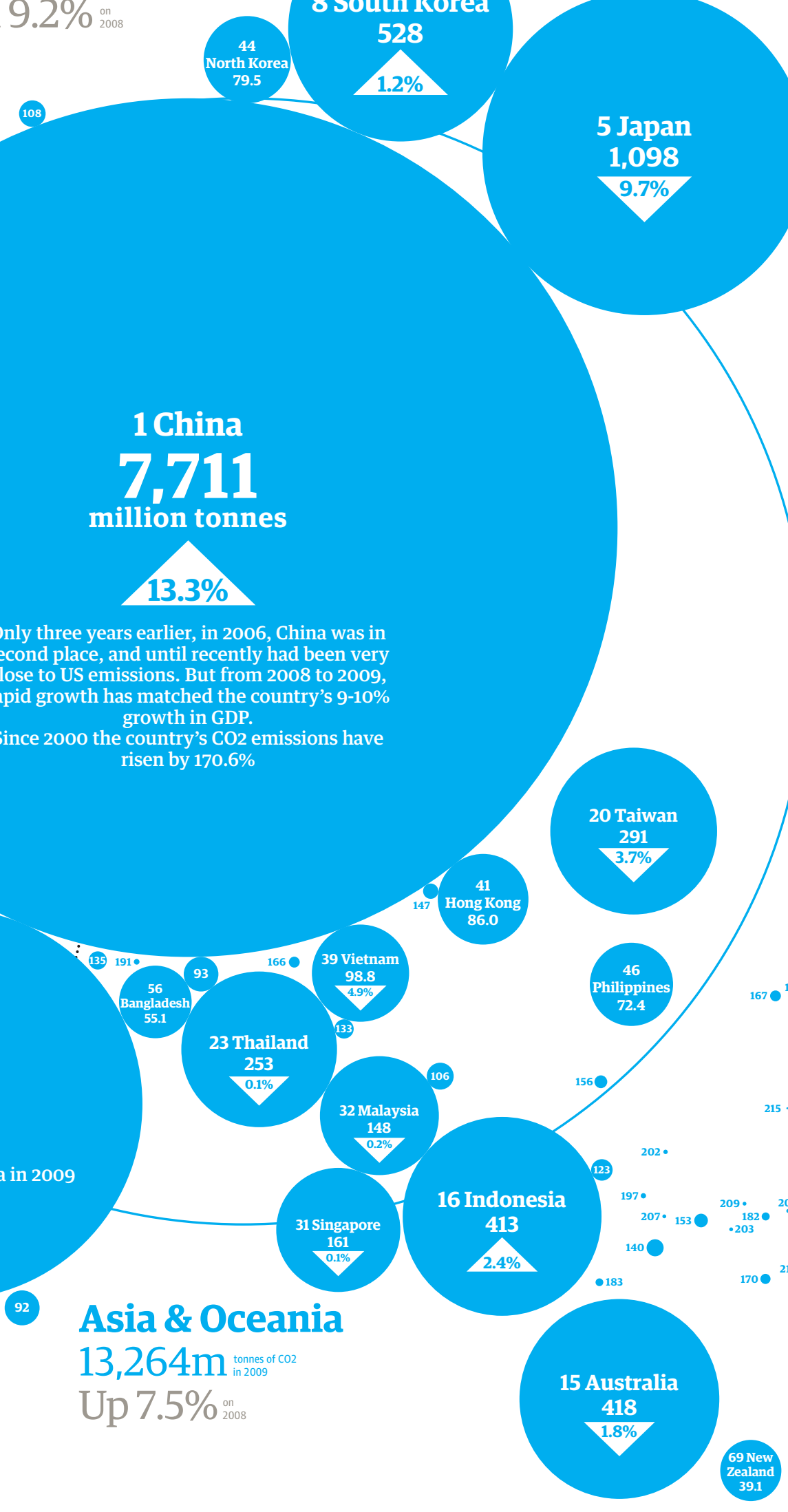
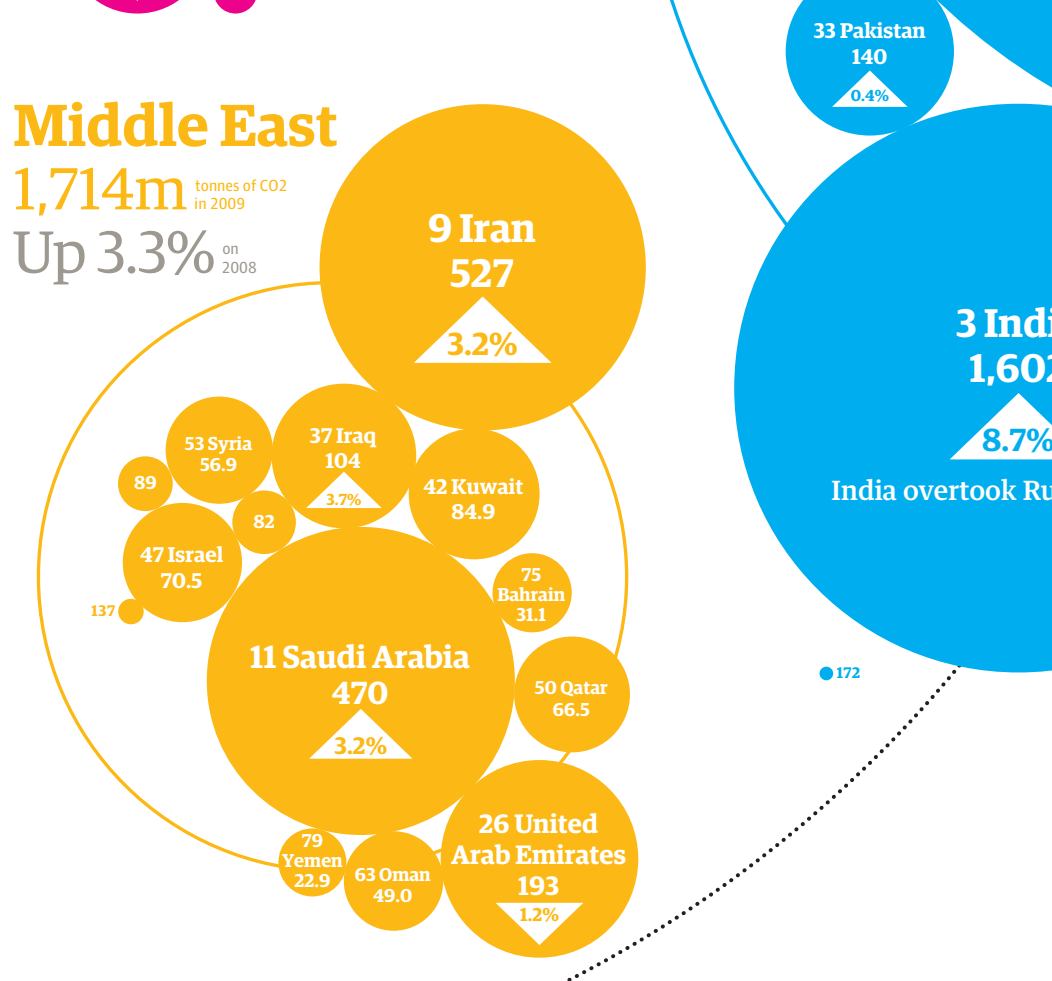
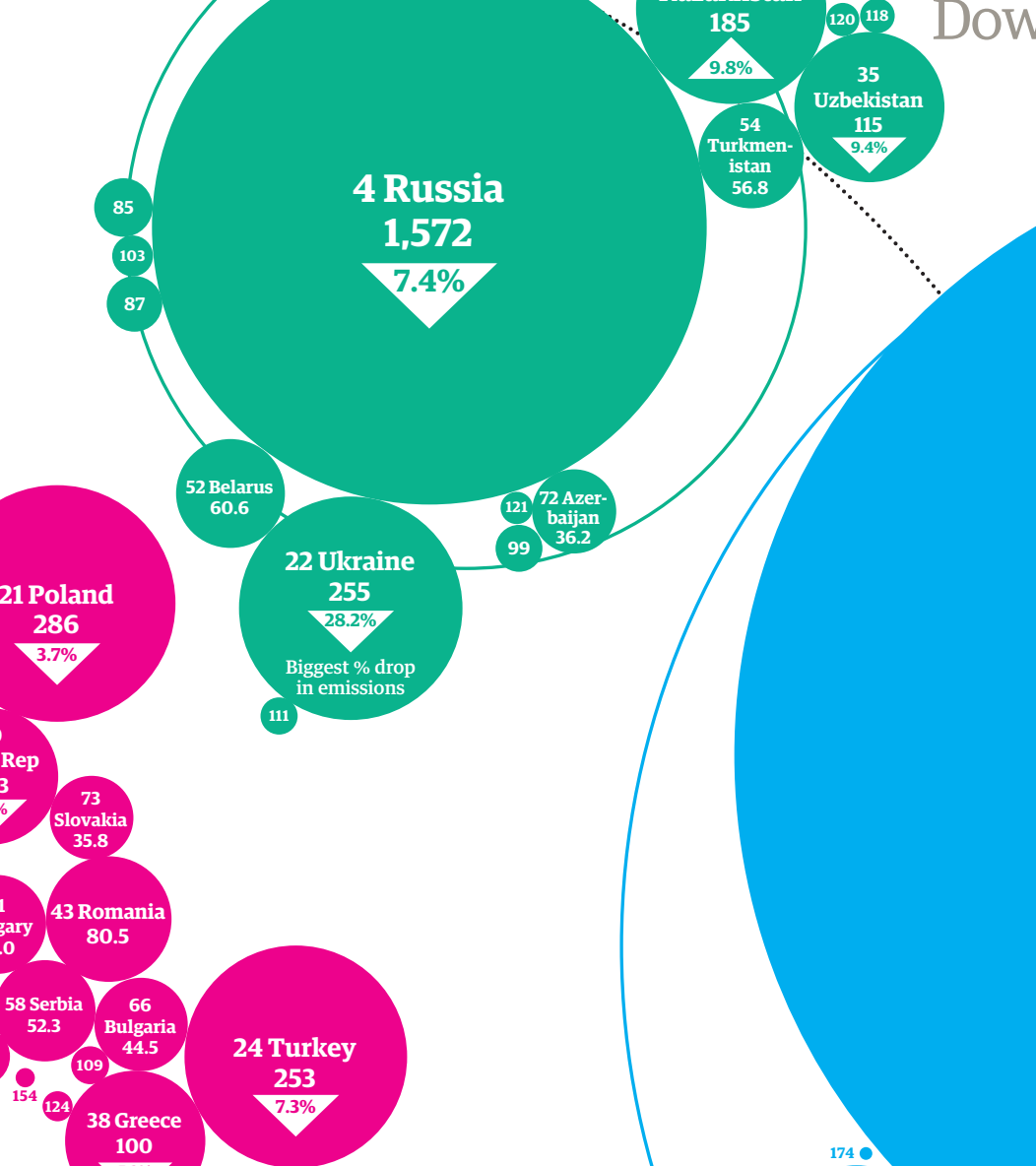
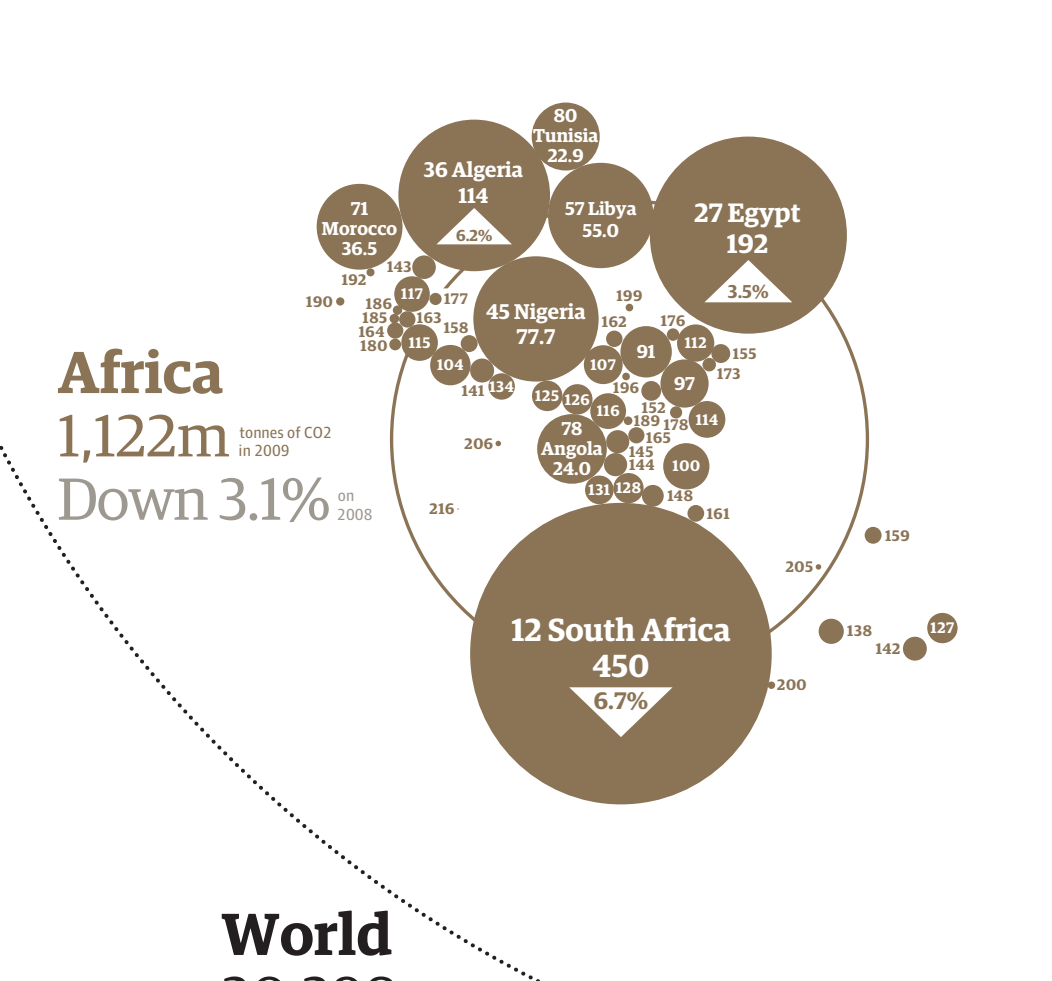
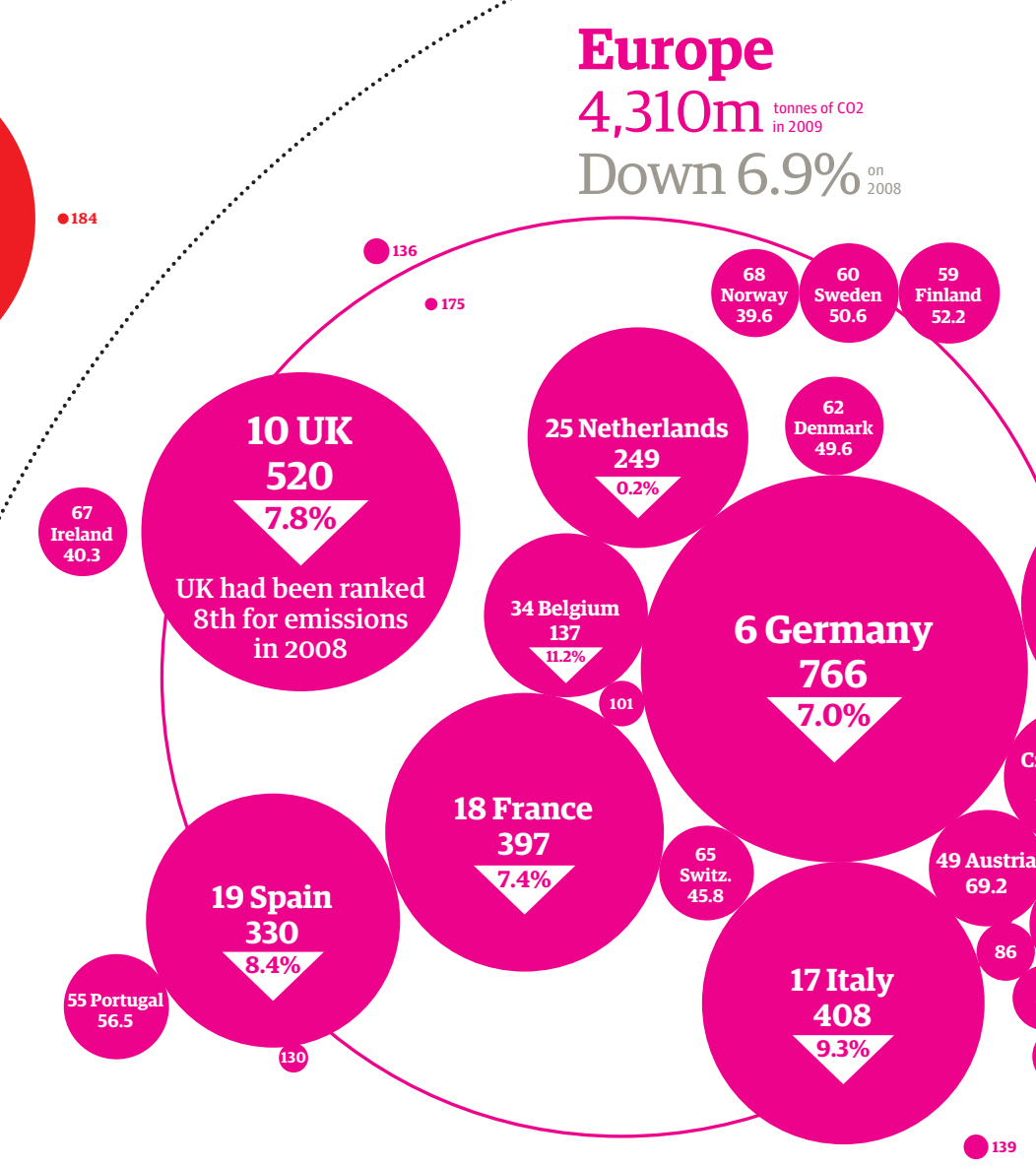
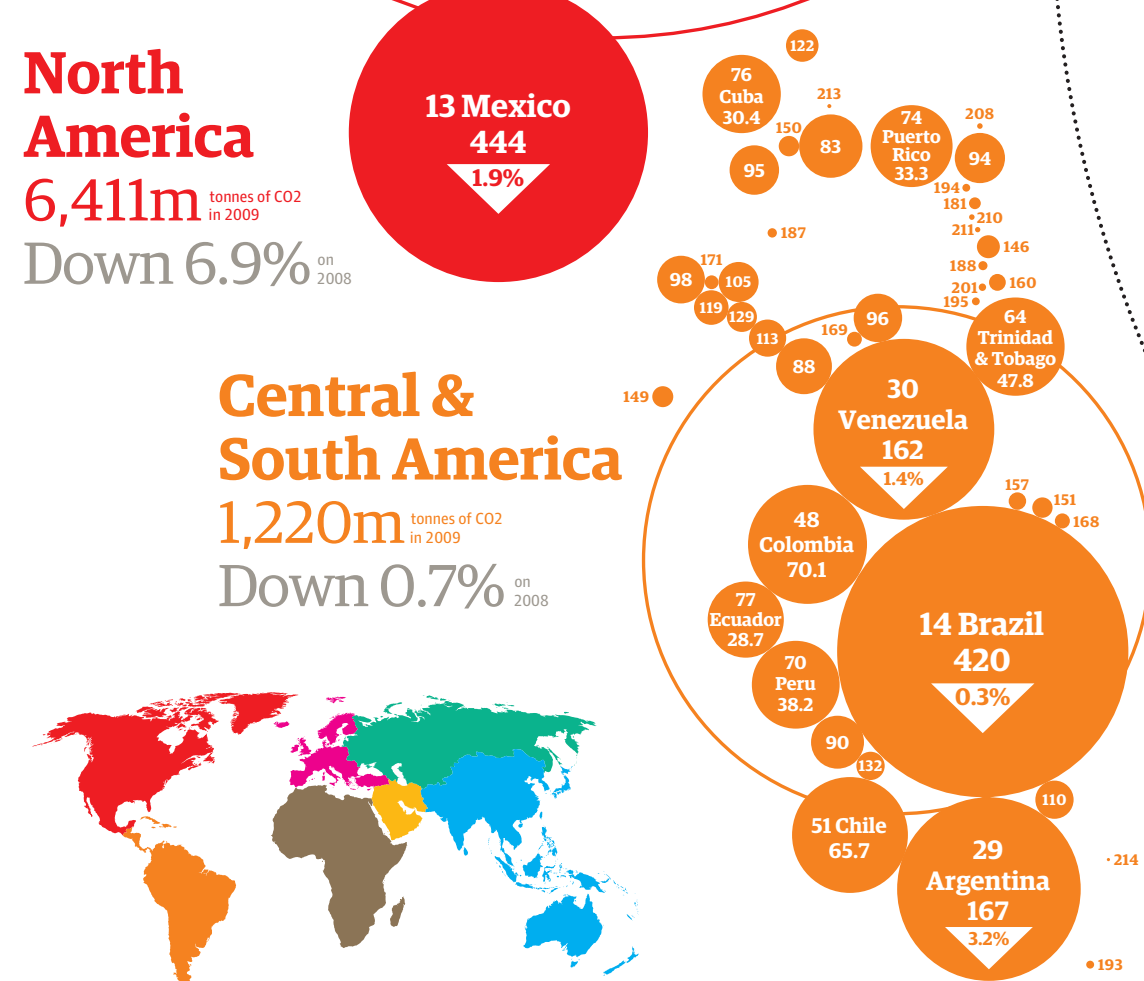
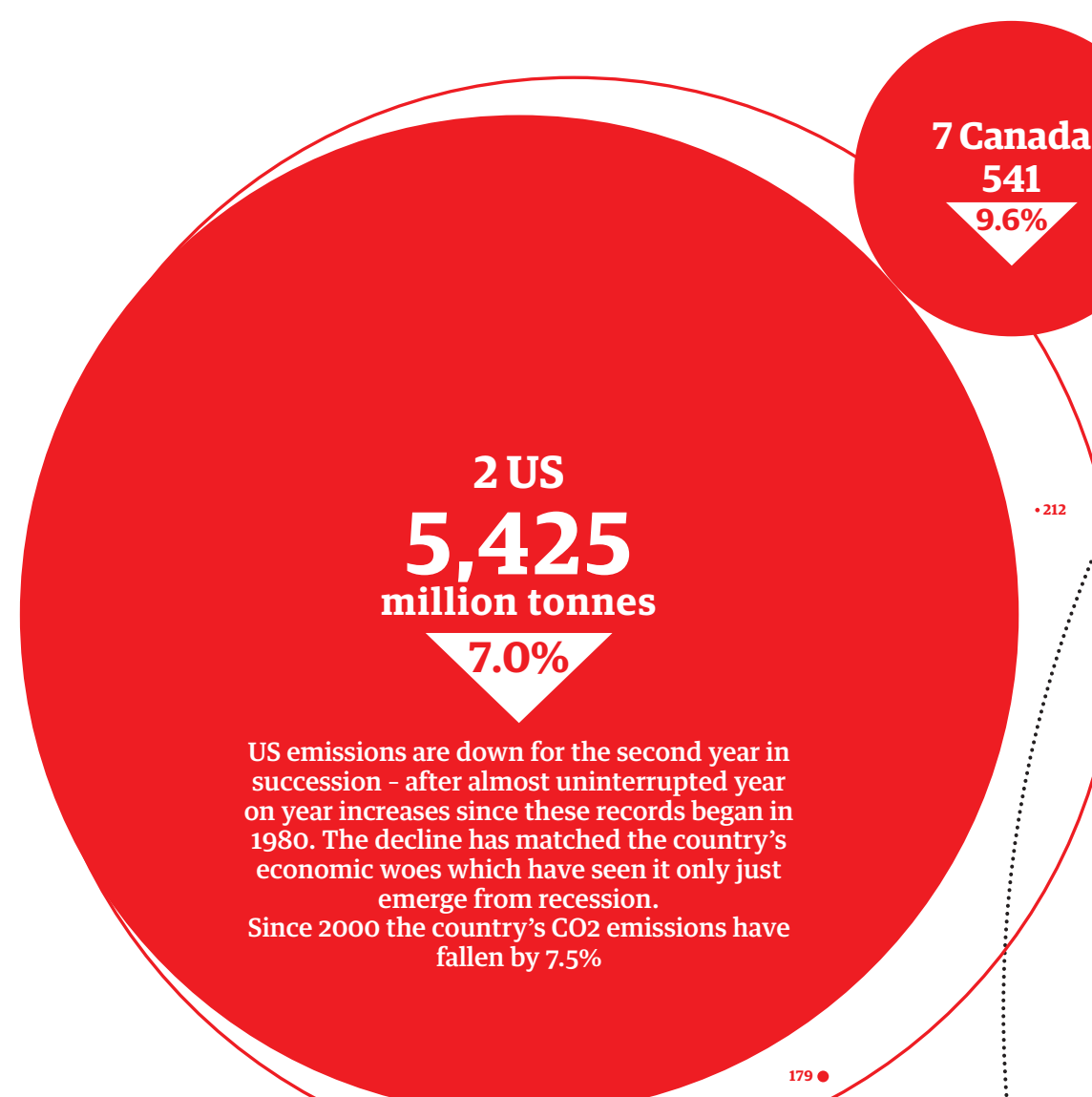
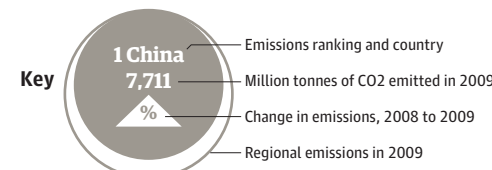


# An atlas of pollution: the world in carbon dioxide emissions

Latest data published by the US Energy Information Administration provides a unique picture of economic growth - and decline. China has sped ahead of the US, as shown by this map, which resizes each country according to CO2 emissions. And, for the first time, world emissions have gone down



Detailed data  
Full list of each country's CO2 emissions and movement in the world emissions league table

Rank/ change on 2008	Country	Million tonnes 2009	Percent change 08-09
1	China	7,711	13.3
2	US	5,425	-7.0
3	India	1,602	8.7
4	Russia	1,572	-7.4
5	Germany	766	-7.0
6	Canada	541	-9.6
7	South Korea	528	1.2
8	Iran	527	3.2
9	UK	520	-7.8
10	Saudi Arabia	470	3.2
11	Indonesia	413	-2.4
12	Australia	418	-1.8
13	Mexico	444	-1.9
14	Brazil	420	-0.3
15	Australia	418	-1.8
16	Indonesia	413	-2.4
17	Italy	408	-9.3
18	France	397	-7.4
19	Spain	330	-8.4
20	Taiwan	291	-3.7
21	Poland	286	-3.0
22	Ukraine	255	-28.2
23	Thailand	253	-0.1
24	Turkey	253	-7.3
25	Netherlands	249	-0.2
26	United Arab Emirates	193	-1.2
27	Egypt	192	3.5
28	Kazakhstan	185	-9.8
29	Argentina	167	-3.2
30	Venezuela	162	-1.4
31	Singapore	161	-0.1
32	Malaysia	148	-0.2
33	Pakistan	140	0.4
34	Belgium	137	-11.2
35	Czech Republic	135	-4.9
36	Algeria	114	6.2
37	Iraq	104	3.7
38	Greece	100	-5.3
39	Vietnam	98.8	-4.9
40	Czech Republic	95.3	-3.8
41	Hong Kong	86.0	10.3
42	Kuwait	84.9	6.3
43	Romania	80.5	-16.6
44	North Korea	79.5	14.3
45	Nigeria	777	-22.4
46	Philippines	72.4	-2.9
47	Israel	70.5	4.8
48	Colombia	70.1	7.9
49	Austria	69.2	-2.5
50	Qatar	66.5	-4.8
51	Chile	65.7	-3.8
52	Belarus	60.6	-9.5
53	Syria	56.9	6.1
54	Turkmenistan	56.8	-1.2
55	Portugal	56.5	1.5
56	Bangladesh	55.1	9.4
57	Libya	55.0	-3.9
58	Serbia	52.3	-3.2
59	Finland	52.2	-4.9
60	Sweden	50.6	-7.7
61	Hungary	50.0	-10.7
62	Denmark	49.6	-8.6
63	Oman	49.0	9.9
64	Trinidad and Tobago	47.8	-4.1
65	Switzerland	45.8	1.0
66	Bulgaria	44.5	-11.9
67	Ireland	40.3	-11.2
68	Norway	39.6	-0.3
69	New Zealand	39.1	-1.1
70	Peru	38.2	4.0
71	Morocco	36.5	-2.2
72	Azerbaijan	36.2	-8.0
73	Slovakia	35.8	-4.5
74	Puerto Rico	33.3	-3.2
75	Bahrain	31.1	1.6
76	Cuba	30.4	4.7
77	Ecuador	28.7	1.7
78	Angola	24.0	1.8
79	Yemen	22.9	13.5
80	Tunisia	22.9	5.7
81	Croatia	21.5	-4.7
82	Jordan	20.0	-2.4
83	Dominican Republic	19.9	2.1
84	Bosnia and Herzegovina	18.3	-15.9
85	Estonia	17.5	-11.8
86	Lithuania	17.4	-0.5
87	Lithuania	15.8	-12.8
88	Panama	15.5	17.7
89	Lebanon	14.8	3.6
90	Bolivia	13.9	-2.7
91	Sudan	13.0	7.0
92	Sri Lanka	12.8	1.7
93	Burma	12.5	-9.5
94	US Virgin Islands	12.5	-3.5
95	Jamaica	12.1	-4.6
96	Netherlands Antilles	11.6	-4.1
97	Kenya	11.5	2.4
98	Guatemala	11.3	-1.4
99	Armenia	11.2	1.5
100	Zimbabwe	10.6	18.6
101	Luxembourg	10.6	-11.2
102	Cyprus	9.4	-3.5
103	Latvia	8.5	8.1
104	Ghana	8.1	9.6
105	Honduras	7.9	-2.4
106	Brunei	7.6	-2.1
107	Cameroon	7.5	-1.9
108	Mongolia	7.4	-3.8
109	Macedonia	7.3	-20.1
110	Uruguay	7.2	-10.2
111	Moldova	7.1	-4.1
112	Ethiopia	6.9	7.1
113	Costa Rica	6.8	-4.4
114	Tanzania	6.7	7.1
115	Ivory Coast	6.6	2.2
116	Congo	6.3	3.8
117	Senegal	6.2	1.8
118	Tajikistan	6.1	-10.4
119	El Salvador	5.9	0.0
120	Kyrgyzstan	5.7	-0.4
121	Georgia	5.3	-4.9
122	Bahamas	5.2	3.1
123	Papua New Guinea	4.8	6.7
124	Albania	4.6	3.8
125	Equatorial Guinea	4.6	-2.1
126	Gabon	4.6	-3.2
127	Mauritius	4.6	-1.0
128	Botswana	4.5	7.7
129	Nicaragua	4.5	-2.9
130	Gibraltar	4.4	-3.8
131	Namibia	4.1	3.7
132	Paraguay	4.0	3.7
133	Cambodia	3.9	-6.1
134	Benin	3.5	4.3
135	Nepal	3.4	3.8
136	Iceland	3.4	-7.4
137	Palestine	3.2	-4.3
138	Madagascar	3.1	13.4
139	Malta	3.1	-2.5
140	New Caledonia	3.0	0.0
141	Togo	2.9	5.6
142	Reunion	2.8	0.0
143	Mauritania	2.7	5.3
144	Zambia	2.7	18.8
145	Congo, Dem Rep	2.7	-2.6
146	Martinique	2.6	6.3
147	Macau	2.4	1.3
148	Mozambique	2.3	4.6
149	Guadeloupe	2.2	-5.1
150	Haiti	2.1	2.9
151	Suriname	2.0	4.0
152	Uganda	1.9	-3.0
153	Fiji	1.9	-6.2
154	Montenegro	1.9	4.3
155	Djibouti	1.8	-6.1
156	Guam	1.7	-3.5
157	Guyana	1.5	0.0
158	Burkina Faso	1.4	2.1
159	Seychelles	1.4	6.1
160	Barbados	1.4	-4.0
161	Swaziland	1.4	17.0
162	Laos	1.3	3.5
163	Niger	1.3	3.5
164	Sierra Leone	1.3	-1.2
165	Malawi	1.3	-4.6
166	Laos	1.2	1.1
167	Wake Island	1.2	-4.3
168	French Guiana	1.1	6.1
169	Aruba	1.1	4.2
170	French Polynesia	1.1	7.7
171	Belize	0.94	-5.4
172	Maldives	0.92	3.4
173	Somalia	0.90	3.4
174	Afghanistan	0.83	-2.9
175	Faroe Islands	0.80	6.4
176	Eritrea	0.77	6.4
177	Mali	0.74	6.4
178	Rwanda	0.74	0.0
179	Bermuda	0.71	4.2
180	Liberia	0.69	2.2
181	Antigua and Barbuda	0.69	4.4
182	American Samoa	0.67	2.2
183	East Timor	0.63	8.7
184	Greenland	0.61	-4.8
185	Guinea-Bissau	0.46	0.0
186	Gambia	0.44	15.4
187	Cayman Islands	0.43	-11.8
188	Saint Lucia	0.41	0.0
189	Burundi	0.37	4.0
190	Cape Verde	0.34	4.5
191	Bhutan	0.33	-11.1
192	Western Sahara	0.32	0.0
193	Antarctica	0.31	17.6
194	Saint Kitts and Nevis	0.30	11.1
195	Grenada	0.30	4.8
196	Central African Republic	0.29	-13.0
197	Solomon Islands	0.29	25.0
198	US Pacific Islands	0.29	0.0
199	Chad	0.29	11.1
200	Lesotho	0.27	5.9
201	Saint Vincent/Grenadines	0.27	17.6
202	Nauru	0.20	9.1
203	Tonga	0.15	-23.1
204	Cook Islands	0.15	65.7
205	Comoros	0.15	25.0
206	Sao Tome and Principe	0.15	11.1
207	Vanuatu	0.15	25.0
208	British Virgin Islands	0.15	25.0
209	Samoa	0.15	-16.7
210	Montserrat	0.15	58.7
211	Dominica	0.14	11.1
212	Saint Pierre and Miquelon	0.11	16.7
213	Turks and Caicos Islands	0.08	0.0
214	Falkland Islands	0.05	0.0
215	Kiribati	0.04	0.0
216	Saint Helena	0.01	11.2
217	Niue	0.01	2.9

Rank/ change on 2008	Country	Million tonnes 2009	Percent change 08-09
111	Moldova	7.1	-4.1
112	Ethiopia	6.9	7.1
113	Costa Rica	6.8	-4.4
114	Tanzania	6.7	7.1
115	Ivory Coast	6.6	2.2
116	Congo	6.3	3.8
117	Senegal	6.2	1.8
118	Tajikistan	6.1	-10.4
119	El Salvador	5.9	0.0
120	Kyrgyzstan	5.7	-0.4
121	Georgia	5.3	-4.9
122	Bahamas	5.2	3.1
123	Papua New Guinea	4.8	6.7
124	Albania	4.6	3.8
125	Equatorial Guinea	4.6	-2.1
126	Gabon	4.6	-3.2
127	Mauritius	4.6	-1.0
128	Botswana	4.5	7.7
129	Nicaragua	4.5	-2.9
130	Gibraltar	4.4	-3.8
131	Namibia	4.1	3.7
132	Paraguay	4.0	3.7
133	Cambodia	3.9	-6.1
134	Benin	3.5	4.3
135	Nepal	3.4	3.8
136	Iceland	3.4	-7.4
137	Palestine	3.2	-4.3
138	Madagascar	3.1	13.4
139	Malta	3.1	-2.5
140	New Caledonia	3.0	0.0
141	Togo	2.9	5.6
142	Reunion	2.8	0.0
143	Mauritania	2.7	5.3
144	Zambia	2.7	18.8
145	Congo, Dem Rep	2.7	-2.6
146	Martinique	2.6	6.3
147	Macau	2.4	1.3
148	Mozambique	2.3	4.6
149	Guadeloupe	2.2	-5.1
150	Haiti	2.1	2.9
151	Suriname	2.0	4.0
152	Uganda	1.9	-3.0
153	Fiji	1.9	-6.2
154	Montenegro	1.9	4.3
155	Djibouti	1.8	-6.1
156	Guam	1.7	-3.5
157	Guyana	1.5	0.0
158	Burkina Faso	1.4	2.1
159	Seychelles	1.4	6.1
160	Barbados	1.4	-4.0
161	Swaziland	1.4	17.0
162	Laos	1.3	3.5
163	Niger	1.3	3.5
164	Sierra Leone	1.3	-1.2
165	Malawi	1.3	-4.6
166	Laos	1.2	1.1
167	Wake Island	1.2	-4.3
168			